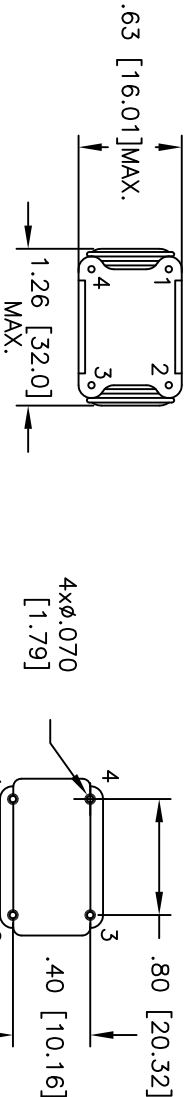
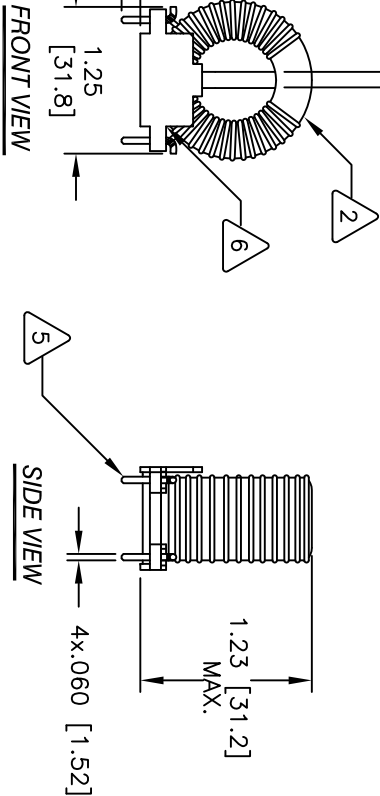
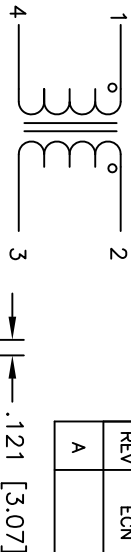


The information contained in this drawing is the sole property of CMS Coil Winding Specialist. Any reproduction in part or whole without written permission of CMS Coil Winding Specialist is prohibited.

REVISION HISTORY					
REV	ECN	DESCRIPTION	SIGN & DATE		
			BY	DATE	CHK DATE
A		PRODUCTION RELEASE	RLU	4/17/07	JLJU 4/17/07



BOTTOM VIEW

MOUNTING HOLES PATTERN

- WIND BOTH COILS EVENLY SPACED
- CONSTRUCTION:
MAX LEAKAGE INDUCTANCE = 6.2uH
TYPICAL SRF = 1.75MHz
HI-POT TEST FOR INTERWINDING ISOLATION = 1250VDC
MAX. TEMP RISE AT RATED CURRENT = 25°C
RATED CURRENT = 8.0 AMPS AC MAX
DCR=4.26 MILLI-OHMS MAX. PER SIDE
L = .425 mH MIN. +25% (100KHz, <1Vrms)
SPECIFICATIONS @ 25°C

- WIRE: UL RECOGNIZED 155°C OR 200°C RATED MAGNET WIRE
CWS BYTEMARK OR OTHER APPROVED PART
CORE: COATED FERRITE TOROID, HIGH PERM MNZN

- RATING CLASS B (130°C) REQUIRED
MATERIAL: UL RECOGNIZED 94V-0 FLAMMABILITY FOR BOBBIN

NOTES: UNLESS OTHERWISE SPECIFIED. READ FROM BOTTOM UP.

CODE		MFG. P/N	DESCRIPTION	ITEM NO.	
IDENT					
PARTS LIST					
AUTOCAD	X	COILWMS COM, INC www.coilwms.com CWS Coil Winding Specialist. 353 W GROVE AVENUE ORANGE, CA. 92665			
SOLIDWORKS					
SIGN	DATE				
DRWN	RLU	4/17/07	Common Mode Line Chokes		
CHKD	JLJU	4/17/07			
ENGR.	KSUM	4/17/07			
APPR.	JLJU	4/17/07			
SIZE		DMG. NO.	REV		
B		PM-12-431U-8A	A		
SCALE		1 = 1			SHEET 1 OF 1

COWS COM, INC
353 W GROVE AVENUE
ORANGE, CA. 92865

COWS Coil Winding Specialist.